

**Mosquito Run**  
**July 14 & 15, 2018**  
**Crow-Hassan Park Reserve**  
**Riverbend Camp**  
**Rogers, MN**

<b>EVENT</b>	<b>DAY</b>	<b>TIME</b>	<b>COST</b>	
<b>50 Endurance</b>	<b>Saturday</b>	<b>*5:30am</b>	<b>Sr \$80</b>	<b>Jr \$55</b>
<b>25 Limited Distance</b>	<b>Saturday</b>	<b>*6:30am</b>	<b>Sr \$65</b>	<b>Jr \$40</b>
	<b>Sunday</b>	<b>*6:00am</b>		
<b>25 Competitive</b>	<b>Saturday</b>	<b>7:30am</b>	<b>Sr \$60</b>	<b>Jr \$40</b>
	<b>Sunday</b>	<b>7:00am</b>		
<b>15 Drive</b>	<b>Saturday</b>	<b>10:00am</b>	<b>all \$30</b>	
<b>10 Drive</b>	<b>Sunday</b>	<b>10:00am</b>		
<b>10 Novice</b>	<b>Saturday</b>	<b>2:00pm</b>	<b>all \$30</b>	
	<b>Sunday</b>	<b>8:30am</b>		

\*Times listed are earliest start possible for Endurance and LD. Competitive, Novice and Drives may allow incremental earlier starts depending on number of entries – but at least one group will start at the listed time.

Sanctioned by AERC, UMECRA, MNDRA, MDDA & AHDRA\*\*\*

\*\*\* Note for AHDRA members – points for placings will have a 50% bonus added (ex: 10 points becomes 15 points) towards AHDRA year end awards!

**MUST** have a copy of current coggins to leave with ride management.

Current copy of AERC card required for Endurance & Limited Distance. Non-AERC members pay an additional \$15. \$5/day trail pass required unless the rider has a current Three Rivers Park Pass

Please park respectfully and set up pens accordingly, space may be an issue.

Camping is \$15/night per rig or \$5/day for day use. Camping fees collected at registration.

Dogs must be on leash and under control at all times.

☺ Potluck Saturday night! Bring a dish to share. ☺

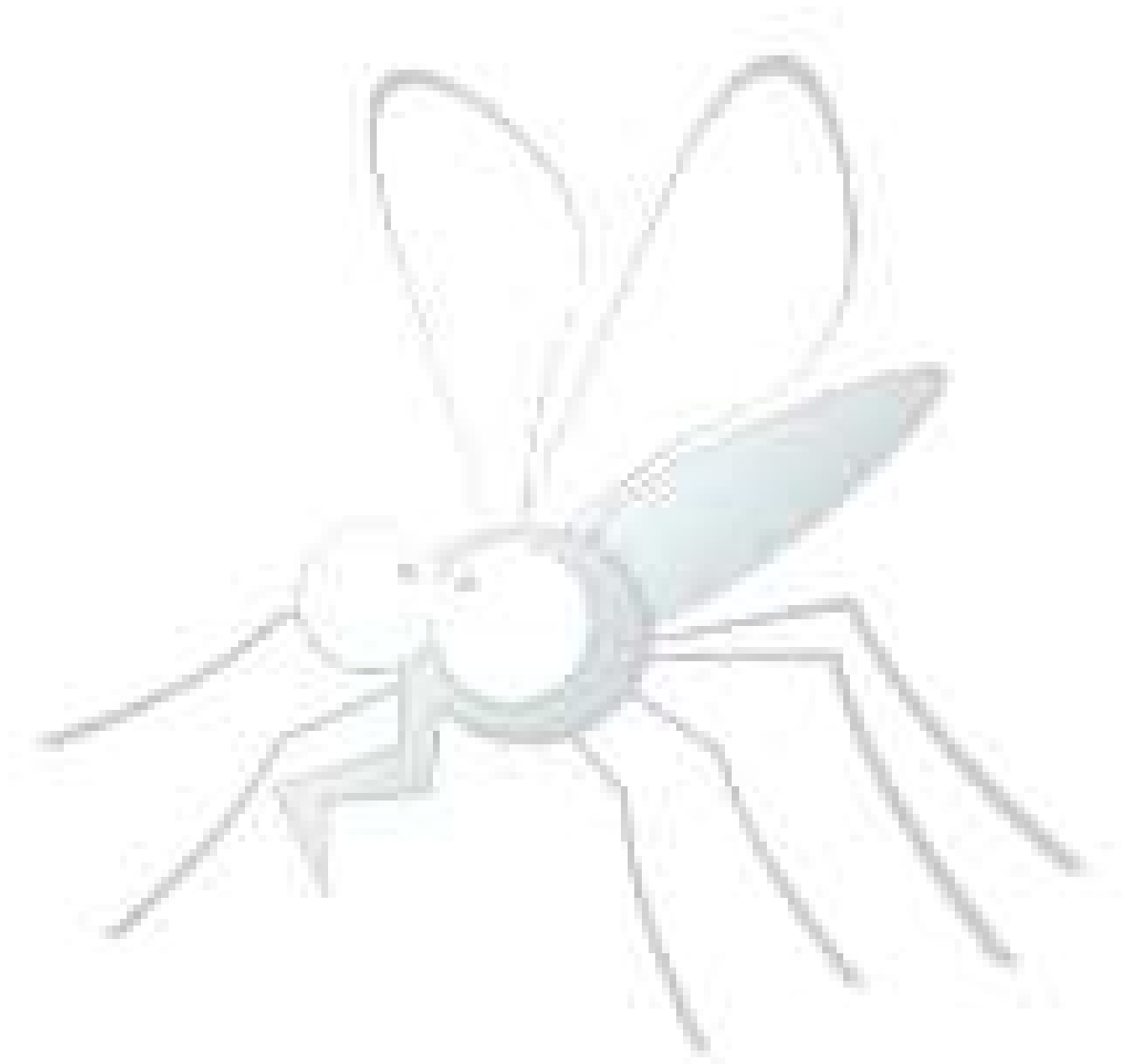
Ride Management: Peggy Pasillas, Joan Elbert & Sharon Hahn.

Send pre-registration before July 1, 2018 to:

**Joan Elbert**  
**8569 Alverno Avenue**  
**Inver Grove Heights, MN 55077**

Ride Questions? Contact Peggy at [peggy@pasillas.net](mailto:peggy@pasillas.net) or call 651-353-7959 or Joan at [jddreamcatcher@aol.com](mailto:jddreamcatcher@aol.com) or call 651-387-2644. Carriage/Drive Event questions – contact Sharon

Hahn at [Sharon.hahn@usa.com](mailto:Sharon.hahn@usa.com) or 612 770 5846.



**Directions:**

The park is located north west of the Twin Cities off of I-94. Exit 205 . West on 241. Left on to County Road 116 at the first stop light. Cross over bridge and look for ride signs on your right. Or From I-94, take the Rogers exit and go south through Rogers to the t-intersection. Turn right on County Road 116. Follow 116, camp will be on your left.

